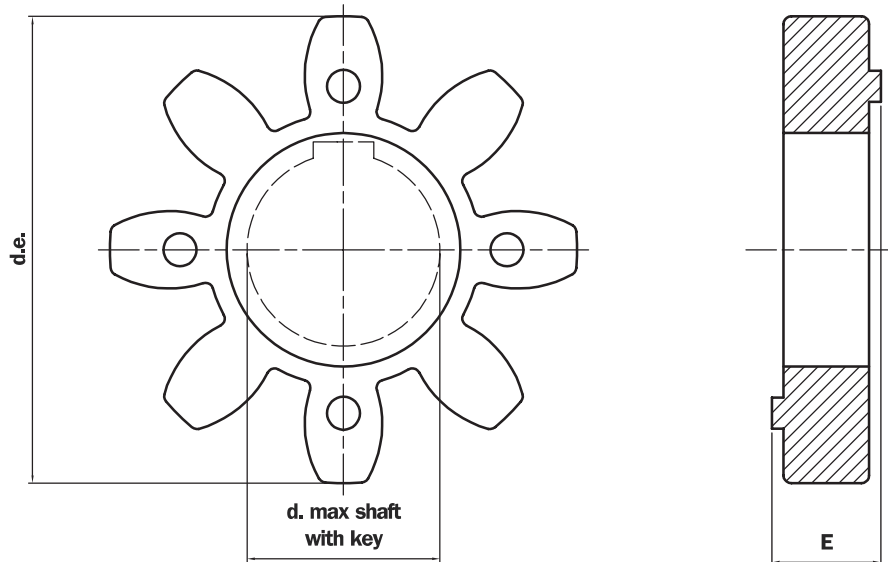


## EGE\*\* series

Made of black oil-resistant rubber, these components serve to interconnect the two halves (motor - pump) of a flexible coupling. They are suitable for all industrial applications and will withstand temperatures from -20°C to +90°C. Shore A hardness 87



**TABLE 35**

Half-coupling type	Code	E	d.e.	d.max	Nominal torque Nm	Max torque Nm	Weight (kg)
<b>SGEA01/SGEG01</b>	EGE0	15	40	16	10	20	0,006
<b>SGEA21</b>	EGE2	18	65	25	95	190	0,02
<b>SGEA31/SGEG31</b>	EGE3	22	80	35	190	380	0,04
<b>SGEA51</b>	EGE5	26	105	45	310	620	0,06
<b>SGEG40/SGES40</b>	EGE4	24	95	40	310	620	0,09
<b>SGEG60/SGES60</b>	EGE6	28	120	55	430	860	0,13
<b>SGEG80/SGES80</b>	EGE8	38	160	75	1250	2500	0,36

## EGE\*\*RR series

Made in polyurethane Laripur - E 2203-93A, red colour, are suitable for applications where high levels of torque are transmitted. They will withstand temperatures from -30°C to +120°C. Shore A hardness 95

**TABLE 36**

Half-coupling type	Code	E	d.e.	d.max	Nominal torque Nm	Max torque Nm	Weight (kg)
<b>SGEA01/SGEG01</b>	EGE0RR	15	40	16	15	30	0,006
<b>SGEA21</b>	EGE2RR	18	65	25	115	230	0,02
<b>SGEA31/SGEG31</b>	EGE3RR	22	80	35	250	500	0,04
<b>SGEA51</b>	EGE5RR	26	105	45	400	800	0,06
<b>SGEG40/SGES40</b>	EGE4RR	24	95	40	380	760	0,09
<b>SGEG60/SGES60</b>	EGE6RR	28	120	55	550	1100	0,13
<b>SGEG80/SGES80</b>	EGE8RR	38	160	75	1400	2900	0,36
<b>SGEG90</b>	EGE9RP	42	200	95	8900	9900	0,59

Version for extreme temperatures available on request.  
For further information, contact the MP Filtri Technical and Sales Department.